

# T·A·P® CRAWL SPACE VAPOR BARRIERS

Provide moisture vapor control with a product built to last!



## Overview

Complimenting other TAP® programs is the new line of crawl space sealing products featuring an incredibly tough ten mil, fiber reinforced poly that assures the Pest Management Professional and homeowner decades of moisture vapor control.

## Product Description

Engineered for a lifetime of durability, the CS1200 Crawl Space Vapor Barrier is a three-ply laminate combining two layers of linear low density polyethylene and a high strength fabric grid for a full ten mil thickness. This product is specifically designed for high tensile strength and continued performance long after thinner products have deteriorated. The CS1200 Crawl Space Vapor Barrier is clear allowing for Pest Management Professionals to visually inspect for pest issues.

## Performance Features

- Not a food source for insects or rodents
- Multiple layers plus cord reinforcement to resist punctures & tears
- Cold crack resistant
- Very low permeability, greatly inhibiting moisture transmission
- Very long life expectancy provides cost savings through fewer replacements or repairs
- Class C, ASTM E-1745-97 Standard Specifications for water vapor retarders used in contact with soil

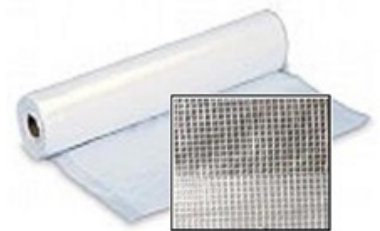
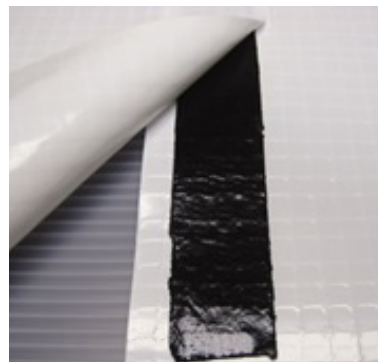
## Installation

CS1200 is easily cut to any desired length and shape with common hand tools and is designed to be wrapped up onto crawl space walls where a complete seal is desired. Bonding to crawl space walls, piers, or other intrusions or seaming is accomplished by using the high-tack neoprene fab-tape designed for this products. Odd angles and pipes are handled using moldable pipe boot material.



## Packaging/Pricing

CS1200 is available in 4, 8, 12, and 20 foot widths in 100-foot-long rolls. Contact us or visit our web store at [www.TAPinsulation.com](http://www.TAPinsulation.com) for more information and pricing.



# T·A·P® CRAWL SPACE VAPOR BARRIERS

Provide moisture vapor control with a product built to last!

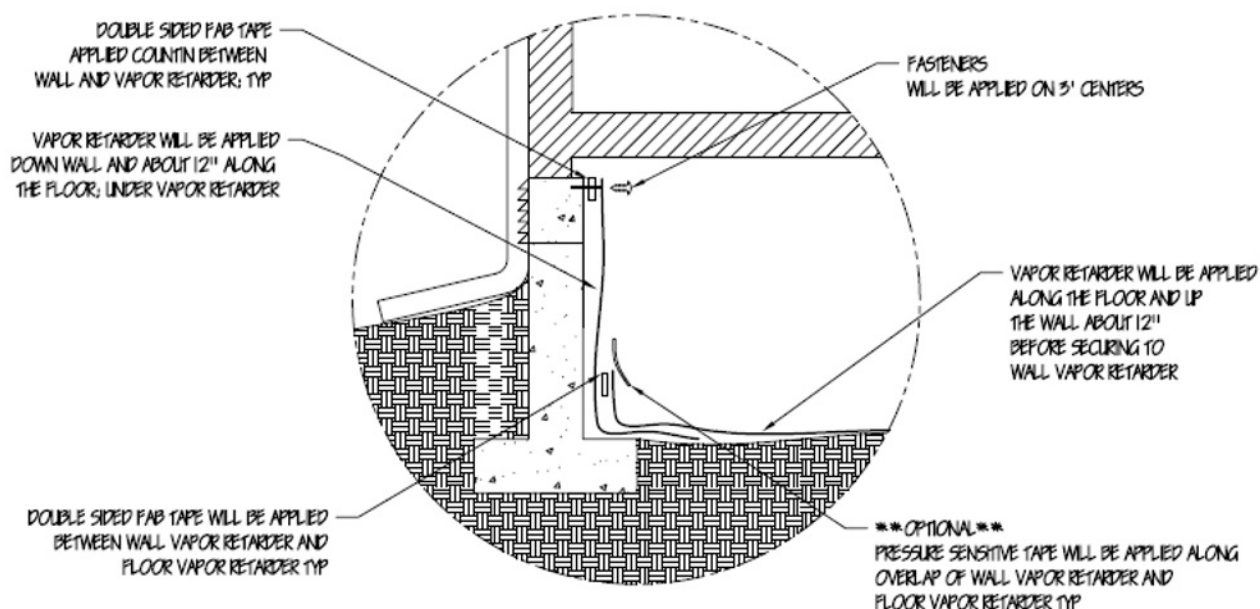


## Sample Crawl Space Job Cost based on 1,200 Sq. Ft.

Seal the crawl space floor and up the foundation walls with The CS1200 Crawl Space Vapor Barrier.

Square feet required—1,400		
Job Selling Price	1,200 sq. ft. x \$0.60/sq. ft.	\$720.00
Cost of CS1200 Poly (including freight)		\$308.00
Fab Tape		<u>\$75.00</u>
	<b>Estimated Gross Profit</b>	<b>\$337.00</b>

### Crawl Space Wall Attachment



NOTE: This document does not attempt to address all aspects of an installation for all applications. The information presented is general information in order to familiarize the individual with the overall scope of the project.

